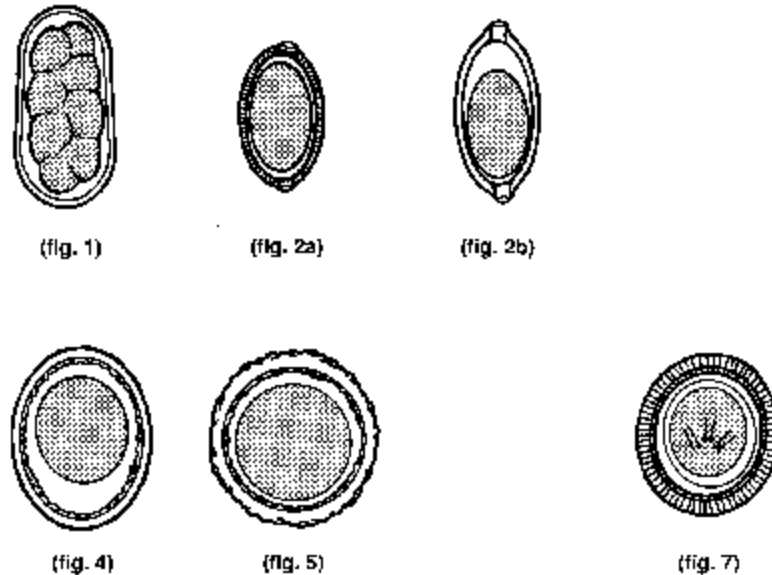


The major types of worm eggs found in feline feces

(Not drawn to scale. Protozoan oocysts are not shown here.)



- Fig 1 **Hookworm** eggs (*Ancylostoma* and *Uncinaria* spp.) (oval: 64 x 41 μm)
- Fig 2a The uncommon **lungworm** eggs (*Capillaria* spp.) are barrel-shaped with plugs at each end. The plugs are often asymmetrically placed as drawn here. (70x35 μm)
- Fig 2b **Whipworm** eggs (*Trichuris* spp.). (Rare and unimportant in cats; common in dogs.) The egg is lemon-shaped and has bipolar plugs. (63-85 x 30-36 μm)
- Fig 4 *Toxascaris leonina*, the less common feline **roundworm**, lays slightly oval eggs with thick, smooth and colorless shells. (oval: 75-85 x 60-75 μm)
- Fig 5 *Toxocara cati*, the most common feline **roundworm**, lays round eggs with thick and pitted shells. (dia. 65-75 μm subspherical)
- Fig 7 The “*Taenia* type” eggs of *Taenia* **tapeworms** may be passed in the feces as eggs that are round and have thick, radially-striated shells. (dia. 31-37 μm) Each egg contains a larvae with six hooks, some of which should be visible.

NOTE: Don't forget to look for protozoan oocysts too! (e.g., **coccidia** oocysts, especially *Isospora* spp., whose oocysts are shaped somewhat like the drawing fig 4 above and are very common.)