

# Feline Dental Formula and Estimating Kitten's Age

## Dental Formula:

Deciduous teeth:  $2(Di\ 3/3\ Dc\ 1/1\ Dp\ 3/2) = 26$

Permanent teeth:  $2(I\ 3/3\ C1/1\ P\ 3/2\ M\ 1/1) = 30$

## Eruption:

### Incisors

Di 1 2 – 3 wk

Di 2 2 – 3 wk

Di 3 3 – 4 wk

I 1 3 ½ - 4 mo

I 2 3 ½ - 4 mo

I 3 4 – 4 ½ mo

### Canines

Dc 3 – 4 wk

C 5 mo

### Upper Premolars

Dp 2 2 mo

Dp 3 2 mo

Dp 4 2 mo

P 2 4 ½ – 5 mo

P 3 5 – 6 mo

P 4 5 – 6 mo

### Lower Premolars

Dp 3 4 – 5 wk

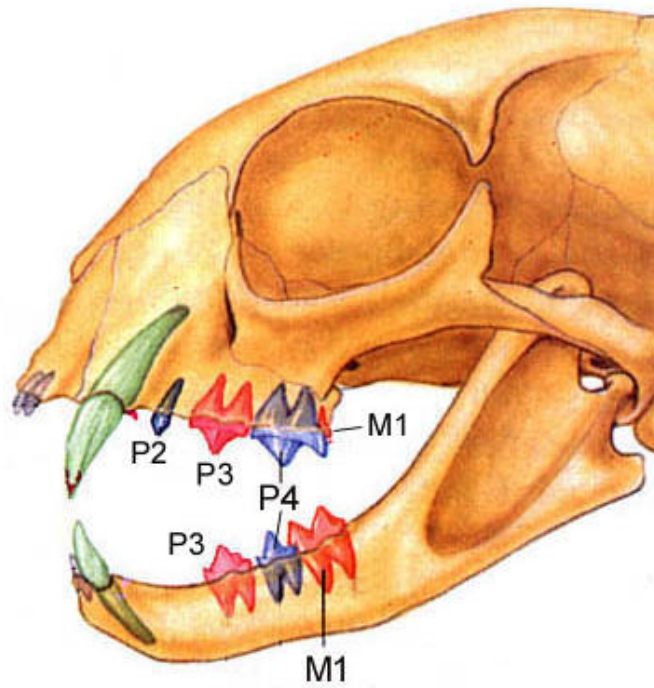
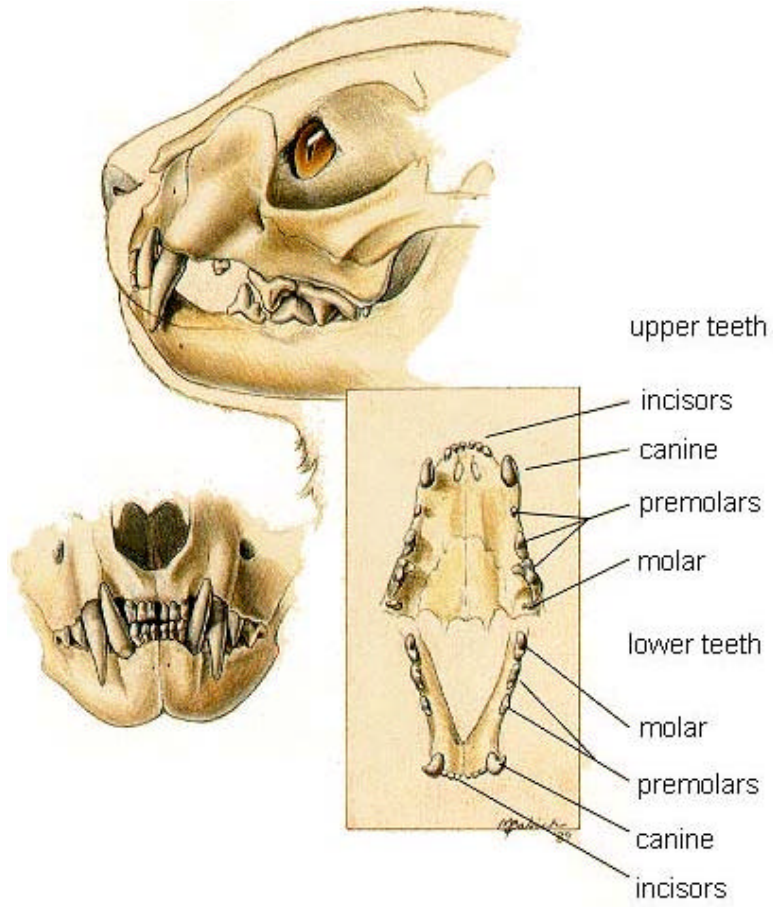
Dp 3 4 – 5 wk

P 3 5 – 6 mo

P 4 5 – 6 mo

### Molars

M 1 4 – 5 mo



*Adapted from Hamilton/Hudson: Atlas of Feline Anatomy for Veterinarians*